



SECO/WARWICK



CAMLAW

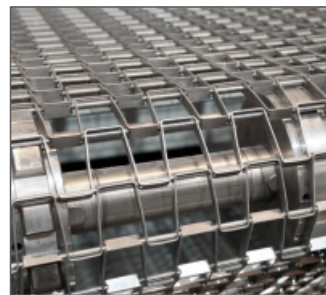
Spare Parts and CAB Line Modification

SECO/WARWICK's Worldwide Aftermarket Parts and Service

SECO/WARWICK can provide field technical support and replacement parts for all equipment manufactured by both SECO/WARWICK and Camlaw Ltd. (SECO/WARWICK is the exclusive supplier of CAMLAW CAB equipment service and replacement parts). We have successfully provided both parts and rebuild services for other manufacturers as well. Technicians are available for equipment breakdowns, rebuilds, upgrades, relocating equipment, trouble shooting, and preventative maintenance.

SECO/WARWICK specializes in providing furnace parts of all types including:

- heating elements
- fan assemblies
- thermocouples
- elements of ceramic insulation
- gas heating system components
- fluxer parts: nozzles, pumps, flow meters, filters
- electrical systems parts: frequency inverters, thyristor controllers, PLC
- complete sets of maintenance parts
- muffles
- conveyor belts
- oxygen analyzers



Conveyor belts



Recirculation fans



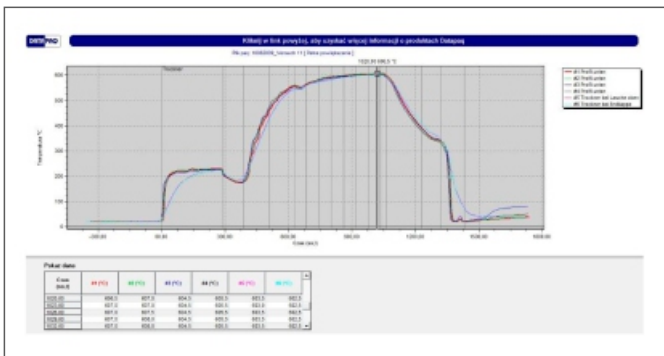
Heating elements with ceramic support



Strip foil curtain box



Air jacket atmosphere cooling chamber



Continuous CAB Line Temperature Profile



SECO/WARWICK Group

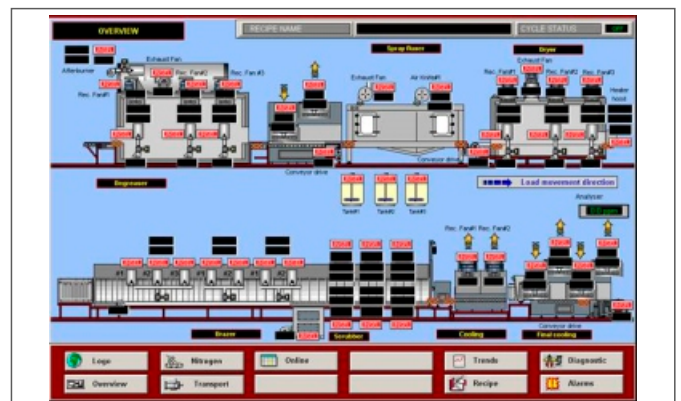
CAB Line Modification and Services

SECO/WARWICK has the knowledge and experience to provide repairs and upgrading of a CAB equipment, whether it was produced by SECO/WARWICK or other manufacturers:

- increasing the capacity of the CAB continuous lines with the addition of a Convection Preheat Chamber,
- replace water cooled chambers with an air jacket solution,
- replace fiber glass curtains by the strip foil,
- upgraded dated control systems with the latest technology,
- update the gas heating system following to meet current safety standards,

Our service team is to your disposal offering a wide range of services:

- annual maintenance and overhaul of the equipment,
- heating uniformity test using a data logger,
- checking the brazing equipment tightness using Helium detection method,
- Technical support solving other problems with CAB equipment and process



Control panel screen view

POLAND
SECO/WARWICK S.A.
Sobieskiego 8
66-200 Świebodzin, Poland
tel. +48 68 3820 500
fax +48 68 3820 555
info@secowarwick.com.pl
www.secowarwick.com

POLAND
SECO/WARWICK Europe Sp. z o.o.
Świerczewskiego 76
66-200 Świebodzin, Poland
tel. +48 68 3819 800
fax +48 68 3819 805
europe@secowarwick.com.pl
www.secowarwick.com

USA
SECO/WARWICK Corp.
P.O. Box 908
Meadville, PA 16335-6908, USA
tel. +1 814 332 8400
fax +1 814 724 1407
info@secowarwick.com
www.secowarwick.com

USA
RETECH SYSTEMS LLC
100 Henry Station Rd.
Ukiah, CA 95482, USA
tel. +1 707 462 6522
fax +1 707 462 4103
leroy.b.leland@retechsystemsllc.com
www.retechsystemsllc.com

GERMANY
SECO/WARWICK Service GmbH
An der Molkerei 15
D-47551 Bedburg-Hau, Germany
tel. +49 (2821) 713 100
fax +49 (2821) 713 10-29
service@secowarwick.com
www.secowarwick.com

CHINA
SECO/WARWICK RETECH
Thermal Equipment Manufacturing
(Tianjin) Co., Ltd.
7B Second Xeda Road
Tianjin, China 300385
tel. +86 22 238 28 300
fax +86 22 238 28 305
d.rabenda@secowarwick.com.pl
www.swretech.com.cn

INDIA
SECO/WARWICK Allied Pvt. Ltd.
5th Floor, Amfotech It Park
Road No. 8, Wagle Estate
Thane (W) - 400 604, India
tel. +91 22 6730 1400
fax +91 22 6730 1488
swa-info@secowarwick.com
www.secowarwick.com

BRAZIL
SECO/WARWICK do Brasil Industria
de Fornos Ltda.
Parque Industrial II
Jundiá, SP - Brasil
CEP: 13213-170
tel. +55 (11) 3109-5900
fax +55 11 4525-1047
engefor@engefor.com.br
www.secowarwick.com

RUSSIA
SECO/WARWICK Rus
Pyzhevskiy pereulok, bld 5/1,
office № 400
119017 Moscow, Russia
tel. +7 499 788 9721
moscow@secowarwick.com.pl
www.secowarwick.com

BELARUS
SECO/WARWICK OOO Minsk Office
8 Mielnikajta str., office 26
220004 Minsk, Belarus
tel./fax: + 375 17306 23 71
secom@infonet.by
www.secowarwick.com